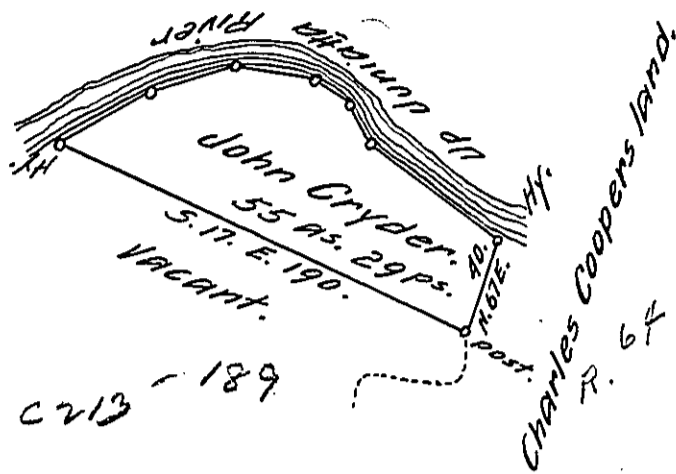


Courses & Distance.
up the river from
Hickory to Hickory.
 N. 5 W. 68.
 N. 18. E. 20.
 N. 5. W. 18.
 N. 31. W. 36.
 N. 60 W. 40.
 N. 75 W. 39. to Hy.
 221.



Situate in Huntingdon County & township on the South
west side of Frankstown branch of Juniatta River.
Containing Fifty five acres & Twenty nine perches and
allowance of Six Per Cent for Roads. Surveyed the 10th
Day of July 1793 in Pursuance of a Warrant Dated the
25th Day of May 1793. John Canan D.S.
Daniel Brodhead Esquire S.G.

** The Warrant is dated 21st May 1793.*

S.G.

IN TESTIMONY that the above is a copy of the original remaining on file in the Department of Internal Affairs of Pennsylvania, made conformably to an Act of Assembly approved the 16th day of February, 1833, I have hereunto set my Hand and caused the Seal of said Department to be affixed at Harrisburg, this tenth day of MAY 1917

Henry Houch
 Secretary of Internal Affairs.